

**ROFFER'S OCEAN FISHING FORECASTING SERVICE, INC. TOLL FREE 800 677-7633 & (321) 723-5759 // WWW.ROFFS.COM**  
**ROFFS™ FISHERIES OCEANOGRAPHIC ANALYSIS FOR THE HUDSON CANYON TO HYDROGRAPHER CANYON OFFSHORE (LORAN)**  
**UPDATED ON FRIDAY 01 AUGUST 2008 FOR FRIDAY P.M. & SATURDAY FISHING ONLY**

Based on a multiple factor analysis, the symbols (hot spot dots) mark the areas where bait concentrations are expected and where fishing action are expected to be better compared with other (non-marked) areas. These are not based on dock rumors or hearsay fishing reports. Fishing reports are stated as such. You should start fishing where you recognize other signs of good fishing conditions near these marked areas. It is very important to use your sea surface temperature (sst°) gauge to locate the boundaries of the water masses, which are outlined. Rather than trying to find water based on the absolute temperature values shown on the map, search for the relative change in sst° where the water mass boundaries occur. Arrows indicate the main current direction. Numbers inside of the dots indicate the number of consecutive days that we have seen favorable conditions in that location. **Afternoon sst° are likely to be at least 1°F warmer than those shown here.** Bottom depths in fathoms (1 fathom = approximately 6 feet).

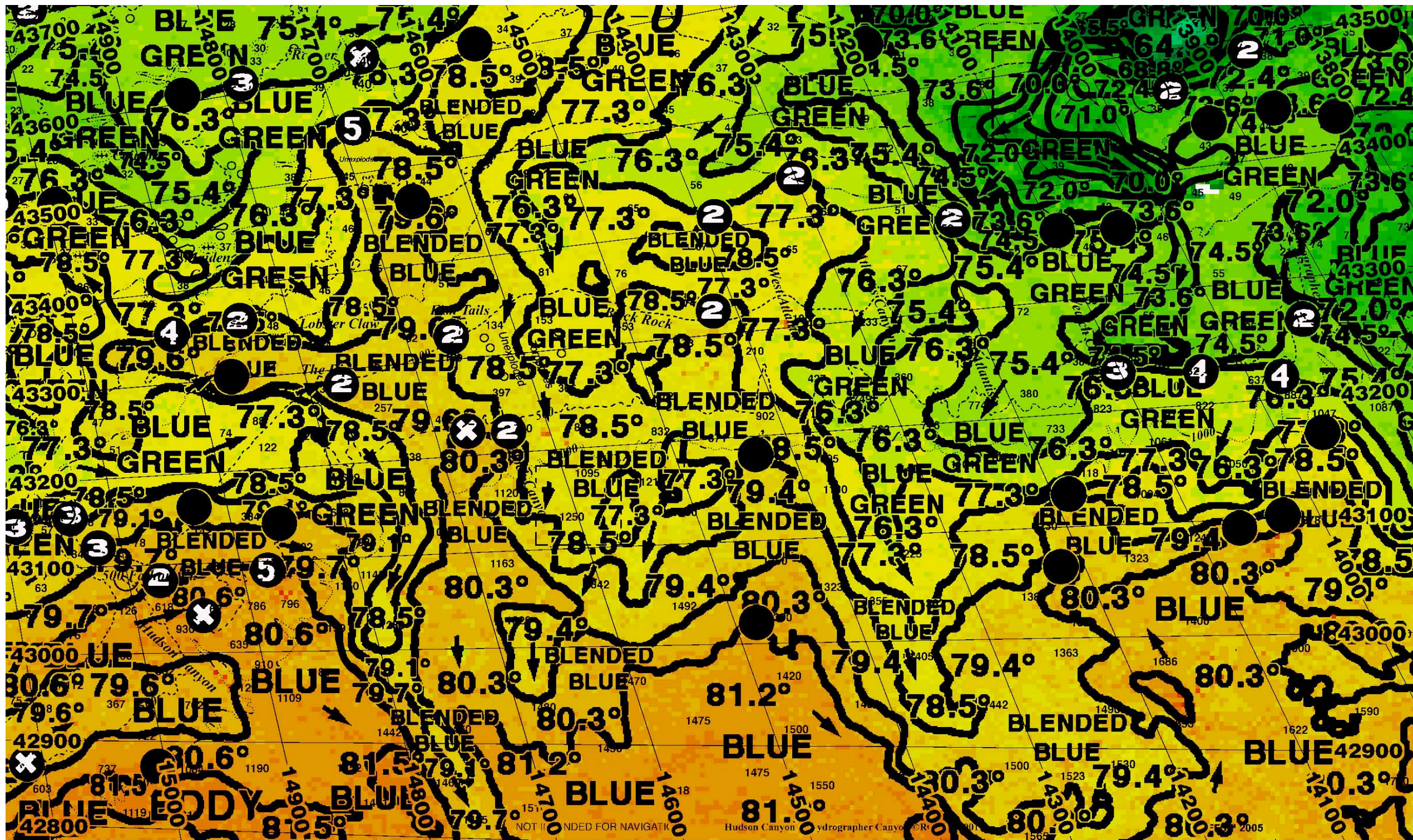
We were able to see this area clearly today to increase your chances for sharks, tuna, dolphin, wahoo, marlin and swordfish action. Overall, we continue to follow this dominating clockwise rotating Gulf Stream Warm Core Eddy in this area that is still offshore and south and southeast of Hudson to Toms Canyon and pushing favorable blue and warmer water (79.7°F – 80.6°F- 81.5°F) inshore especially between the Toms to Hudson Canyon over the 500 to 100 fathom ledges and even as far inshore as the 40-50 fathom ledges inshore of Toms Canyon for your BEST conditions for fishing action. From Toms Canyon northeast to Hudson Canyon the eddy is pulling greener and cooler water in an unfavorable offshore direction (especially east of Hudson Canyon). However, conditions will still be favorable along the Eastern Wall of Hudson Canyon as the water flows from deeper to shallower. As this eddy rotates we expect the conditions to possibly continue to deteriorate from Toms to Hudson Canyon. However, it now appears that the northern edges of this eddy are again pushing in a northern direction (inshore) and also remnant warmer and bluer mixed Gulf Stream water from this eddy is still producing good conditions for fishing action in the area of the Dip and to Fish Tails and south over the 500 fathom ledges of Block Canyon. The key in the Hudson Canyon area is to locate the warmer and bluer/blended blue water masses (79.7°F – 81.5°F).

The better conditions for fishing action occur along the northern edges of this eddy (blue-green to blue, 78.5°F – 79.1°F – 79.7°F -80.6°F) where it has been favorable for two days to two weeks (marked with an X) starting in Toms Canyon over the 100-500 fathom ledges near 15110-50 & 42890-950. Further northeast and inshore, the better chances for fishing action occur over the Eastern Wall of Hudson Canyon where it has also been favorable for two days to two weeks starting over the Bombs area and west near 15040-95 & 43140-60 extending to near 14980-15020 & 43090-115 to near 14945 & 43040. Further north and east additional favorable fishing conditions will occur for up to FIVE days over the 100-500 fathom ledges near 14865-80 & 43095-140. Further north, GOOD conditions for fishing action occur along the blended blue 79.6°F water mass over the 45-50 fathom ledges where water is drifting in a favorable inshore direction near 14850-910 & 43350-60 (favorable for two to four days) extending southwest over the Dip near 14775 & 43290-92. Further east GOOD conditions continue to occur near the Fish Tails to Block Canyon (for up to two weeks now) along the blended blue 79.6° F- 80.3°F water mass boundary from near 14665-70 & 43310-15 extending south to over the 500 fathom ledges near 14635-80 & 43215-20. Further inshore along this same blended blue 78.5°F – 79.6°F water mass boundary you will also increase your chances for fishing action where it has been favorable for up to FIVE days near 14655-90 & 43475-550 and south over the 45 fathom ledges.

On your way offshore, some of the better conditions in this entire area appear to occur along the strong green to blue-green 75.4°F – 76.3°F – 77.3°F – 78.5°F water mass boundary that has been favorable for FIVE days now starting offshore of Shinnecock over the 30-35 fathom ledges near 15000-30 & 43505-10 extending southwest along this same water mass boundary over the 30 fathom ledges to the Bacardi Wreck and north near 15080-95 & 43300-400. Additional GOOD conditions for fishing action will occur where it has been favorable for three days to two weeks along the 75.4°F- 76.3°F water mass boundary over the 40 Fathom Lumps and west over the 35 fathom ledge near 14660 & 43610 to near 14790 & 43600-05.

In the east, and offshore conditions for fishing action do not look as favorable as in the west. You will increase your chances for fishing action in the West Atlantis Canyon vicinity where it has been favorable for two days over the 50 to 100 fathom ledges (76.3° F- 77.3°F – 78.5°F). Further east better conditions for fishing action occur over Veatch Canyon and east to Hydrographer Canyon along the 100-150 fathom ledges (for three to four days now) along the strong 76.3°F –74.5°F - 73.6°F water mass boundary near 14040-100 & 43220-25 to near 13985 & 43210. Additional good conditions for fishing action occur in the Hydrographer Canyon area from the 100 fathom ledges where it has been favorable for two days near 13930 & 43265 extending south to where you locate the warmer and bluer 78.5°F water mass boundary over the 1000 fathom ledge near 13975 & 43175. Further offshore of the 1000 fathom ledges, you will increase your chances for fishing action where you locate the bluer and warmer 78.5°F – 80.3°F water mass boundary. Just north of Veatch to East Atlantis Canyon you will increase your chances for fishing action along the strong 73.6°F – 75.4°F water mass boundary over the 50 fathom ledges near 14050-100-90 & 43360-85. Inshore, good conditions for shark, tuna and maybe even white marlin will occur along the strong 68.8°F – 72.4°F and then south along the 72.4°F – 74.5°F water mass boundaries starting over the 35 fathom ledges near 13870-950 & 43470-95 extending east to near 13740 & 43485-90 and south over the 40 fathom ledges near 13810-70-915 & 43417-47.

Remember you can request, order and/or download your fishing analyses from our website ([www.roffs.com](http://www.roffs.com)). Please remember to call us while fishing (between 10:30 a.m. and noon) so we can provide a free verbal update. **Thank you for not sharing this analysis with non-paying fishermen. We survive on your honesty.** Spring office hours: Mon. - Fri. 8:30 a.m. - 9:00 p.m. Saturday hours are 9:00 AM -5:00 PM (sometimes earlier depending on demand, weather, and cloud cover). Requests for analyses should be called in by NOON during the summer so we can schedule our staff's hours.



NOT INTENDED FOR NAVIGATION

Hudson Canyon Hydrographer Canyon © R... 2005